



PATIO BLASTER

Concentrated Disinfectant To Remove Green Mould Growth

Technical Data Sheet



BUILDERS COMPLETE RANGE

HSE NO

9830-GB; 9830-NI

Description:

A concentrated disinfectant for the removal and prevention of green mould, black mould, lichens and algae on hard surfaces.

Features & Benefits:

- ◆ **Anti-bacterial.**
- ◆ **Biodegradable.**
- ◆ **Long lasting.**
- ◆ **Contains no bleach or acids.**
- ◆ **No scrubbing or pressure washing required.**
- ◆ **Contains powerful biocide.**
- ◆ **Safe for use on exterior porcelain tiles.**

Uses

Suitable surfaces include: patios, tarmac and asphalt driveways, fencing, decking, pathways, roofing, painted and glazed pots, garden furniture and ornaments, weatherboard, brickwork, masonry, York stone, concrete, pebbledash, garden sheds, greenhouses, conservatories, gravestones, gravel, PVC, caravans, tennis courts and other artificial play/sports surfaces.

Also ideal for use on delicate surfaces such as glass, rendering, mortar and plaster and porcelain tiles.

Limitations

Avoid run off onto flower beds, lawns and fish ponds. Keep animals off treated surfaces until completely dry. Avoid contact with fish tanks, ponds and any aquatic life.

Do not contaminate foodstuffs, eating utensils or food contact surfaces. Do not contaminate ground, water bodies or watercourses with chemicals or used container. Avoid run off onto flower beds, lawns and fishponds. Keep off treated surfaces until completely dry.

Application

Simple 3 step system – dilute, apply, leave to dry.

Apply to dry surfaces only. Brush any loose debris off the surface to be treated. Dilute 1 part PATIO BLASTER to 4 parts water for normal use. (For lighter growths use a dilution of 1:9 parts). Apply using a low pressure water spray or watering can fitted with a rose. Simply saturate the surface then leave to dry. Rinse out sprayer or watering can after use. Note: Do not apply if rain is imminent (within 6 hours).

PATIO BLASTER will kill off green growth within 2 to 3 days and will gently clean all treated surfaces. Kills black mould, but residual black mould staining may persist. It will also help to protect the

surface from the reoccurrence of organic growth for several months after treatment.

Cleaning Of Tools

Rinse out sprayer or watering can after use with plenty of clean water. Note: Do not throw rinsing water onto plants/ grass.

Size

2.5L and 5L plastic bottles.

Coverage

4-8m² per litre depending on porosity of substrate.

Colour

Clear liquid.

Shelf Life

24 months from date of manufacture when stored in unopened bottles.

Storage Conditions

Store in cool, dry conditions in a sealed container between +5 and +30°C, away from food, animals and children. Protect from frost, high temperatures and direct sunlight.

Disposal Of Containers

Do not leave empty containers where residue could be harmful to children, animals or the environment. Remove any bottles or used material to a central disposal point in accordance with local regulations.

Health & Safety

Please refer to separate safety data sheet (SDS) for full handling, use and storage instructions. Keep out of reach of children. It is the user's responsibility to determine suitability for use. If in doubt, contact our Technical Department for advice.

Note: this information is for general guidance only, since site conditions and labour are beyond our control.

STATUTORY CONDITIONS OF APPROVAL RELATING TO USE.

FOR USE ONLY AS A SURFACE BIOCIDICIDE.

Application rate: For light growths dilute 1 part concentrate to 9 parts water (100ml per litre). For heavy growths dilute 1 part concentrate to 4 parts water (200ml per litre). 1 litre of diluted product will treat 4 - 8m².

Users must comply in full with all their legal responsibilities under the Control of Pesticides Regulations 1986 (as amended), including complying with all Conditions of Approval. READ ALL PRECAUTIONS BEFORE USE. HSE 9830-GB, HSE 9830-NI.

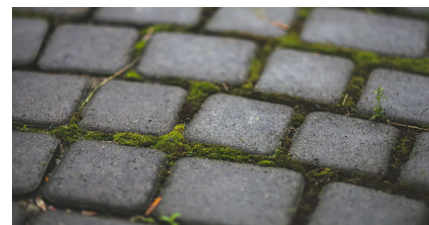
Professional use: The COSHH (Control of Substances Hazardous to Health) Regulations 2002 (as amended) apply to the use of this product at work. Avoid excessive contamination of coveralls. In case of insufficient ventilation wear suitable respiratory equipment. Guidance on suitable respiratory protective equipment and eye protection is provided in HSE Booklet HS(G)53: "The Selection, Use and Maintenance of Respiratory Protective Equipment – A Practical Guide". To avoid risk to man and the environment, comply with the instructions for use.

Specification Summary

Appearance	Clear liquid
Flammability	Non-flammable
Composition	Waterbased
Active Ingredient	Benzalkonium Chloride 4.5% w/w
Commodity Code	3402901090

Product / Order Details

Code	Colour	Size	Barcode	UFI
BDH108	Clear	2.5L	5060021369826	CM10-G0T4-N002-YPEK
BDH109	Clear	5L	5060021369871	CM10-G0T4-N002-YPEK



Part of the Bond It Builders Complete Range

Head Office: Unit H4, Premier Way, Lowfields Business Park, Elland, West Yorkshire. HX5 9HF.

Telephone: +44 (0)1422 315300 **Email:** salesuk@bonditgroup.com

EU Office: SISL (Bond It) Ireland Limited, 70 Sir John Rogerson's Quay, Dublin 2.

Website: www.bonditgroup.com

Note: The data presented in this leaflet is in accordance with the present state of our knowledge, but does not absolve the user from carefully checking all supplies immediately on receipt. We reserve the right to alter product constants within the scope of technical progress or new developments. The recommendations made in this leaflet should be checked by preliminary trials because of conditions during processing over which we have no control, especially where other companies raw materials are also being used. The recommendations do not absolve the user from the obligation of investigating the possibility of infringement of third parties rights and, if necessary clarifying the position. Recommendations for use do not constitute a warranty, either expressed or implied, of the fitness or suitability of the products for a particular purpose.



Certificate Number 6152
ISO 9001
ISO 14001
ISO 45001

Version 5: Updated 23/07/24
Supercedes: V4 11/04/22

bond it